

FC Flexi-Clip

For the **flexible fastening** of conduits on all surfaces



On concrete



On drywall



On cable trays



On metal and wood

FC Flexi-Clip

The name says it all – one product, many applications!



With the FC Flexi-Clip and the well-proven ESD, the mounting of conduits without the need of using any tool is cheap, unbeatably fast and user-friendly.

For all surfaces on which the ESD cannot be used, the FC is simply fixed by a screw.

The advantages:

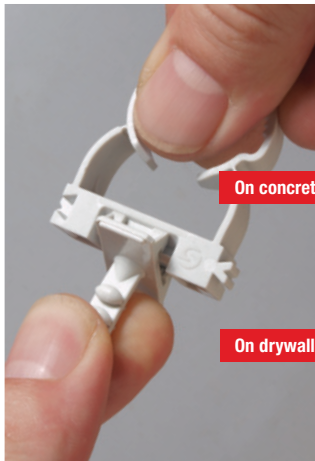
- 60 % time saving!
- The laying of conduits works on virtually all surfaces
- For the fastening with the ESD system now rawplug, no screw and – except a drill – no tool is required
- Conduits can be pre-fixed for precise and fast laying
- By the push of a thumb you have a closed clip for higher drop protection



Alternatively, it can be mounted by using a screw or a dowel nail!



Size-accurate mounting of conduits from 16–50 mm! The conduit can be easily pre-fixed and by the push of a thumb you have a closed clip including drop protection.



On concrete

On drywall



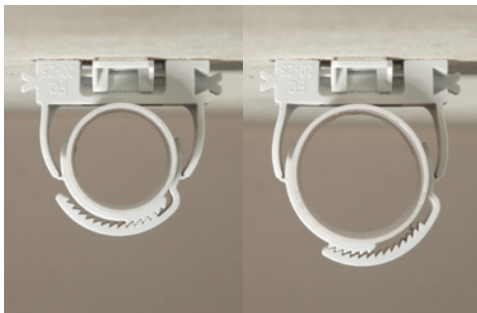
Simply clip the ESD on the FC Flexi-Clip.
Drill, Fasten, finish!



On cable trays



For fastening conduits on cable trays,
the FC Flexi-Clip is connecte to the EDV
or the ESV.



User friendly and cost-effective. Each FC Flexi-Clip
can be used for 2 conduit sizes.



One drill hole suffices. The useful alignment mechanism
makes it possible to combine even different clip sizes.

Schnabl products at a glance

Once you've worked with them you'll never go back

Conduit installation

- EC** Euro Clip
- UVB** Universal clamping bracket
- FC** Flexi-Clip
- ESD** Euro fastening anchor
- EDV** Euro twist-on connection
- ESV** Euro connector lock
- SGC** Schnabl Thread Clip
- ECV** Euro-Clip Connector
- ESP** Euro shooting plate
- EKP** Euro adhesive pad
- AKS** Distance gripper clamp
- RK** Conduit Claw
- ESS** Single fastening clamp
- DSS** Double fastening clamp
- DSA** Double fastening clamp



Cable installation

- DKS** Dowel clamp
- FS** Fixing mounting base
- DSS** Double fastening clamp
- DSN** Dowel fastening nail
- MDSN** Metal dowel fastening nail
- MND** Ceiling nail
- KB** Cable bracket
- KBS** Cable bracket for shooting
- SH** Cable Holder
- SHS** Cable Holder for screws



Surface- and recessed installation

- TAP** Support anchor panel
- TA** Support anchor
- TB** Terrace bracket
- USE** Recessed clamp single
- USD** Recessed clamp double
- USA** Recessed clamp autom.



Installation in Dry Wall

- USA** Recessed clamp autom.
- ESD** Euro fastening anchor
- CF** C-Fix
- PD** Board anchor
- SBA** Schnabl drill stop



On insulations

- DHI** Insulation fixing

In concrete ceilings

- SBC** Schnabl Wire Mesh Clip

Mounting on cable trays

- GTH** Basket Tray Holder

Mounting of junction boxes

- SDC** Schnabl Distribution Box Clip

Drilling in hollow building blocks, ceramic tiles, glass

- LB** Lance drill



Schnabl Stecktechnik GmbH

Bahnhofplatz 1, 3100 St. Pölten, Austria

Phone +43 (0) 2742/22167-0, Fax +43 (0) 2742/22167-50

office@schnabl-steck.com, www.schnabl-steck.com